



# AVOLVED LEADERSHIP PROGRAMME

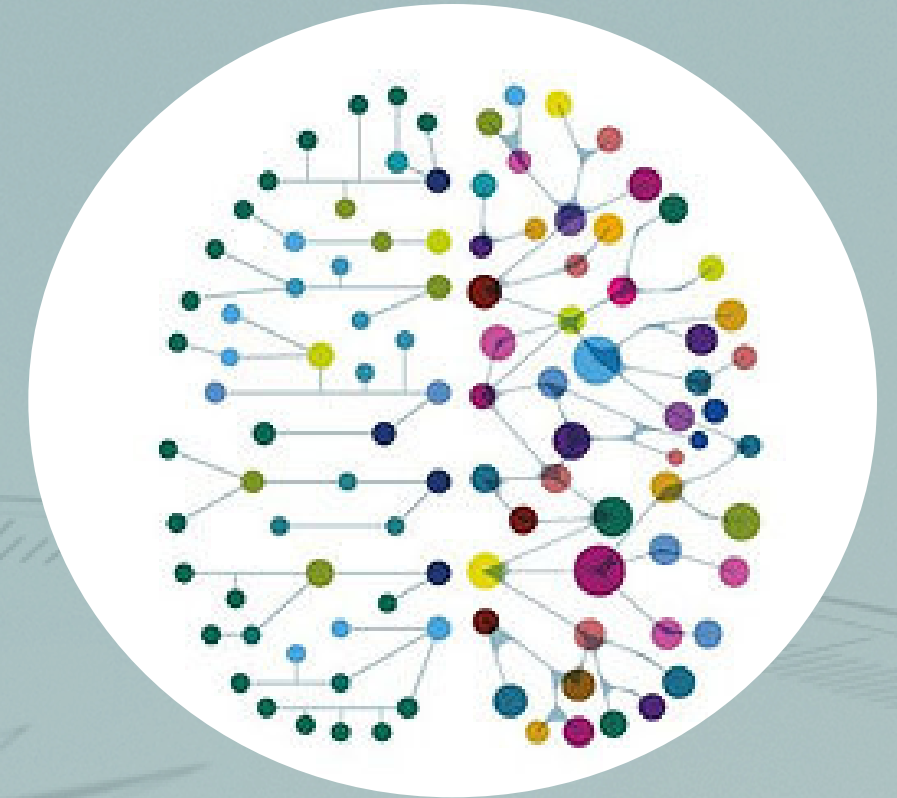


**Routes**  
[more than]  
**Coaching**

Our leadership programme offers deep and comprehensive content that covers every aspect of leadership, from effective communication to ego optimal functional range.

It is designed to help increase confidence, decrease self-doubt, develop self-awareness and identify your leadership style. All while becoming a true and authentic leader who inspires positive change in their organisation.

## Our Approach



Within this programme, we implement the NBI Leadership Style assessment, specifically for those in managerial/leadership roles or those looking to be promoted to these roles.

**Why AVOLVED?** In our coaching philosophy, authenticity isn't just a value – it's the foundation for meaningful transformation. While “evolve” traditionally speaks to growth and change, we believe true evolution begins with the courage to be real.

That's why we chose **AVOLVED** – a deliberate shift from “E” to “A” – to place **authenticity** at the heart of every step. Whether you're *AVOLVING* through challenges or *AVOLVED* into fuller alignment, our journey starts with embracing who you truly are.



# Interested In More?



Get in touch with us:

[debbie@routescoaching.co.za](mailto:debbie@routescoaching.co.za)  
[cassie@routescoaching.co.za](mailto:cassie@routescoaching.co.za)



*Unlock Your Potential*

**“Leaders with empathy do more than sympathize with people around them: they use their knowledge to improve their companies in subtle, but important ways.”**

**- Daniel Goleman**